

Glacier recession and water resources in Peru's Cordillera Blanca

Michel BARAER,¹ Bryan G. MARK,² Jeffrey M. McKENZIE,¹ Thomas CONDOM,³
Jeffrey BURY,⁴ Kyung-In HUH,² Cesar PORTOCARRERO,⁵ Jesús GÓMEZ,⁵
Sarah RATHAY¹

¹*Department of Earth and Planetary Sciences, McGill University, Montréal, Quebec, Canada*
E-mail: michel.baraer@mail.mcgill.ca

²*Department of Geography, The Ohio State University, Columbus, OH, USA*

³*Institut de Recherche pour le Développement (IRD), Miraflores, Peru*

⁴*Department of Environmental Studies, University of California, Santa Cruz, CA, USA*

⁵*Unidad de Glaciología y Recursos Hídricos, Autoridad Nacional del Agua (ANA), Distrito de Independencia, Huaraz, Peru*

ABSTRACT. The tropical glaciers of the Cordillera Blanca, Peru, are rapidly retreating, resulting in complex impacts on the hydrology of the upper Río Santa watershed. The effect of this retreat on water resources is evaluated by analyzing historical and recent time series of daily discharge at nine measurement points. Using the Mann–Kendall nonparametric statistical test, the significance of trends in three hydrograph parameters was studied. Results are interpreted using synthetic time series generated from a hydrologic model that calculates hydrographs based on glacier retreat sequences. The results suggest that seven of the nine study watersheds have probably crossed a critical transition point, and now exhibit decreasing dry-season discharge. Our results suggest also that once the glaciers completely melt, annual discharge will be lower than present by 2–30% depending on the watershed. The retreat influence on discharge will be more pronounced during the dry season than at other periods of the year. At La Balsa, which measures discharge from the upper Río Santa, the glacier retreat could lead to a decrease in dry-season average discharge of 30%.

1. INTRODUCTION

The retreat of mountain glaciers in response to ongoing climate change is expected to have a major impact on alpine environments globally (Huss and others, 2010). Many studies predict detrimental societal, ecological and economic impacts due to glacier retreat-related hydrological changes (Braun and others, 2000; Jansson and others, 2003; Hannah and others, 2007; Vergara and others, 2007; Brown and others, 2010; Kistin and others, 2010; Uehlinger and others, 2010). In the Cordillera Blanca, Peru, coupled natural–human studies have shown that, in the context of an increasing regional population, the vulnerability of Andean society is tied directly to water availability (Mark and others, 2010; Bury and others, 2011). However, evaluating the influence of meltwater runoff on large river basin flows in different environments remains a major scientific challenge (Milner and others, 2009; Kaser and others, 2010). This challenge is often amplified by logistical difficulties in gathering long-term, reliable measurements like those faced in high-elevation tropical environments (Hofer and others, 2010).

In conditions of continuous retreat, glaciers generate a transitory increase in runoff as they lose mass (Mark and McKenzie, 2007). This increase is limited in time as the amount of frozen water stored in the glaciers decreases (Mark and others, 2005). As a consequence, the reduction in ice volume will yield a significant increase in annual runoff for only a few decades, followed by a decrease in runoff (Huss and others, 2008). This trend will be even more pronounced during the season of low flow, a period of the year when the relative contribution of glacier meltwater is at its maximum (Stahl and Moore, 2006; Nolin and others, 2010). Year-to-year variability of runoff from a glacierized mountain basin is moderated by the interaction of temperature and

precipitation (Collins and Taylor, 1990). This buffering effect is greatest in basins that have moderate glacier cover, while variation in runoff is greatest in heavily glacierized and unglacierized watersheds. For example, Hagg and Braun (2005) suggest that the minimum year-to-year variations are found where the percentage of glacierized area is 20–50%.

Glaciers, which are vulnerable to predicted future warming, buffer stream discharge from highly seasonal precipitation (Bradley and others, 2006; Vuille and others, 2008a). Kaser and others (2003) describe the response of Cordillera Blanca glaciers to recent climatic fluctuations in a comprehensive analysis of glacier mass balances based on discharge and precipitation data. The use of historical hydrologic observations for predictive modeling has not always led to consistent conclusions about the future contribution of glacial meltwater to streamflow. For example, Juen and others (2007) and Vuille and others (2008b) showed that reduced glacier size leads to decreased volume of glacier melt. This decrease is compensated by an increase in direct runoff. Thus, the mean annual total runoff remains almost unchanged, but the seasonality is considerably amplified. On the other hand, other studies suggest that water supply will peak after several decades of continually increasing as a result of net glacier loss, followed by a sudden decrease (Pouyaud and others, 2005).

In this context, accurate predictions of both societal adaptive capacity and water resource availability require sustained measurements and more quantitative assessments of glacier retreat impacts at the watershed scale.

The objective of the present study is to evaluate the influence of recent and ongoing glacier recession on the hydrological regime for different watersheds of the Cordillera Blanca. In particular, it aims to evaluate the impact of glacial retreat on changes to historical trends in watershed

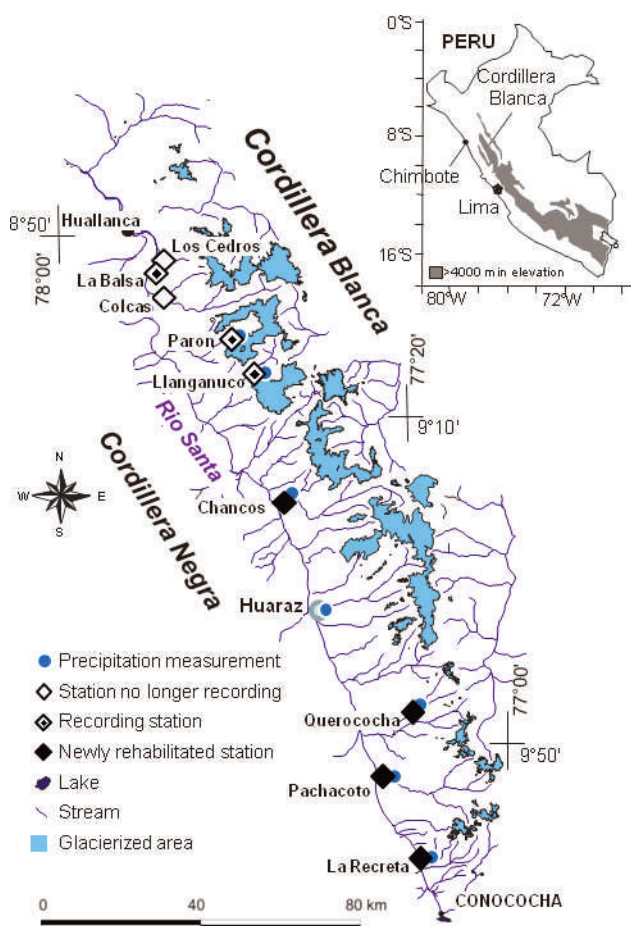


Fig. 1. The Cordillera Blanca and locations of the precipitation measurement stations (circles) and discharge measurement stations (squares) considered for the study.

discharge characteristics. To reach these objectives, we apply the Mann–Kendall method in analyzing trends in daily average historical discharge records from nine glacierized watersheds. We present a new water-balance model that synthesizes hydrographs for different basin parameters and glacier retreat scenarios. This model, validated to trends in the historical field data, allows us to refine the theoretical curves of glacier retreat influence on hydrological regimes and to anticipate how these regimes will continue to change in the future.

2. STUDY SITE

The upper Río Santa watershed in northern Peru captures runoff from the Cordillera Negra to the west, with a dry climate and no glaciers (Mark and McKenzie, 2007; Suarez and others, 2008), and the Cordillera Blanca to the east, which receives more precipitation and is Earth's most glacierized tropical mountain range. The glacier coverage of the Cordillera Blanca has declined from 800–850 km² in 1930 to slightly less than 600 km² at the end of the 20th century (Georges, 2004). The majority of glaciers terminate in watersheds that are drained by the Río Santa to the Pacific Ocean (Fig. 1). In the Río Santa, meltwater provides 10–20% of the total annual discharge, and may exceed 40% in the dry season (Mark and Seltzer, 2003). The region has a strong precipitation seasonality, which is typical of the outer tropics where more than 80% of precipitation falls between

October and April, and the austral winter receives almost no precipitation. In addition, the average annual air temperature is less variable than daily temperature. Glacial ablation occurs continually through the year, although sublimation reduces the melt rate during the dry season to some extent. Accumulation, on the other hand, occurs mainly during the wet season, and only on the higher-elevation portions of the glaciers (Kaser and others, 2003).

The Cañon del Pato 50 MW hydroelectric generation plant located at Huallanca on the Río Santa defines the outflow of a 5000 km² watershed that captures runoff from the majority of the glacierized valleys of the Cordillera Blanca. Starting when the dam was put into operation, the watershed's streamflow has been carefully monitored. As a result, many of the glacierized Santa tributaries were equipped with stream stage and precipitation gauges starting in the 1950s. Regrettably, the long-standing gauge network fell into disrepair at the end of the 20th century in the midst of reforms that privatized hydroelectric generation (Carey, 2010). By the beginning of the 21st century, only three of the stream stage stations – La Balsa (situated just upstream of the power plant), Parón and Llanganuco – remained in operation or had been reactivated after an interruption of several years.

3. METHODOLOGY

3.1. Data acquisition and screening

In 2008, Ohio State University, McGill University, the French Institut de Recherche pour le Développement (IRD) and the Peruvian glaciology unit of the Autoridad Nacional del Agua (ANA) launched a joint project to improve the stream-gauging station network throughout the Cordillera Blanca. Of a total of 13 stations put into operation in 2008 and 2009, five were at historical network measurement points (Fig. 1): Chancos, La Recreta, Pachacoto, Querococha and Miraflores (the latter not used in this study).

The stations presented in this study are equipped with two Solinst 3001 Levelogger series pressure transducers. One transducer is placed into the water at a depth that ensures constant immersion, and a second transducer is placed above the maximum water level to measure atmospheric pressure. The water level is calculated by subtracting the atmospheric pressure from the total pressure measured by the submerged transducer. Both sensors record the pressure at synchronous 15 min intervals, and, for the purpose of this study, records are averaged to daily values. Water levels are converted to discharges using standard hydrological techniques (Dingman, 2002).

In addition to the new discharge data, we analyzed the original historical discharge dataset which begins in 1952 and includes time series for 17 stations. A quality-control analysis of the time series was used to prevent interpretation errors. Suspect drops, peaks or plateaus disqualified portions of a station's record. Missing data and interruptions in records were evaluated for possible interpolation in order to avoid the losses of valuable data which arise from the outright rejection of years with gaps. At the same time, the following rules were developed to prevent filling data gaps inappropriately: (1) gaps of less than 7 days were systematically filled using linear interpolation between the two points delimiting the gap; (2) for gaps greater than 7 days, a decision was made case by case, with linear or polynomial interpolation applied where there was no risk of corrupting the time series;

Table 1. A description of discharge measurement points, drainage basins, the discharge time series and the interpolations made. 'Number of years available' is the number of years with recorded data that were screened for quality control. The number in parentheses, where shown, is the number of these years of data from the new rehabilitated stations

Station	Stream	Watershed area km ²	Period of record	Number of years available	Number of years selected	Number of years with interpolations	Linear interpolation %	Polynomial interpolation %
Chancos	Marcara	221	1953–2009	48 (1)	40	22	2.0	4.6
Colcas	Colcas	237	1954–99	46	37	15	1.5	4.2
La Balsa	Río Santa	4768	1954–2008	55	50	21	1.13	3.2
La Recreta	Río Santa	297	1952–2009	48 (2)	41	10	0	1.4
Llanganuco	Llanganuco	85	1954–2009	55 (1)	44	31	1.4	7.4
Los Cedros	Los Cedros	114	1952–99	48	41	16	1.1	3.9
Pachacoto	Pachacoto	194	1953–2009	46 (2)	41	22	0.4	2.4
Parón	Parón	49	1953–2009	43	30	13	1.0	3.2
Querococha	Querococha	62	1953–2009	47 (1)	43	19	0.8	3.0

(3) years that had remaining gaps were systematically rejected; and (4) time series for which more than 12 years were rejected were not considered for the study. Of the 17 stations, only 9 were found suitable for the trend analysis based on these criteria. About 6000 (less than 5%) of the 132 000 daily discharge values were derived from interpolation (Table 1). A total of 66 years of data were rejected due to potentially insufficient data quality. Despite the efforts and major discarding made during the data screening, it remains possible that the interpolation could have affected the quality of the datasets. This risk, characteristic of historical data research, has to be considered when interpreting the study results, though by following our strict criterion these problems should be minimized.

In the historical dataset, Parón represents a special case. Beginning in the mid-1980s after several years of civil engineering work, the level of Lake Parón was regulated by a drainage tunnel. Therefore, even though the discharge at the lake outlet continued to be monitored, it was inappropriate to use these records for the purpose of the present study.

Precipitation records originally included time series for 36 measurement points, with the oldest starting in the late 1940s and the most recent ending in the early 2000s. As the original data quality differed from location to location, a group of seven measurement points was selected for a reconstituted time series for 1954–99 (Pouyaud and others, 2005). In the present study, we make use of these seven time series (Parón, Llanganuco, Chancos, Huaraz, Querococha, Pachacoto and La Recreta) to study precipitation trends for the Cordillera Blanca region (Fig. 1).

3.2. Trend analysis

The impact of glacier retreat on medium to large watersheds includes changes in annual discharge, dry-season discharge and flow variability (e.g. Braun and others, 2000; Jansson and others, 2003; Barnett and others, 2005; Hagg and Braun, 2005; Stahl and Moore, 2006; Collins, 2008; Moore and others, 2009). Therefore, when there is sustained glacier retreat it should be possible to quantify the influence of glacier retreat on watershed hydrology by identifying trends in these discharge characteristics.

In the present study, three discharge characteristics were used to quantify change in: (1) the mean annual discharge, Q ; (2) the dry-season discharge; and (3) the yearly

coefficient of variation in daily discharge, C_v . As the timing of the dry season may vary slightly from one year to another, we used two values for dry-season discharge: the dry-season average, Q_d , and the lowest, 10-consecutive-day average for a given year, Q_{min} . Q_d was computed by averaging daily discharge from July and August, the lowest discharge months at La Balsa.

The Mann–Kendall test (Mann, 1945), a nonparametric distribution-free method, was used to identify significant trends in Q , Q_d , Q_{min} and C_v time series and to differentiate between significant evolution of annual parameters and random variations. This test was used in numerous hydrological studies (e.g. Hirsch and Slack, 1984; Marengo, 1995; Kundzewicz and others, 2005; Xu and others, 2010), and was justified by its high efficiency even with non-normal, incomplete time series (Yue and Pilon, 2004). The sign of the standard normal statistic (e.g. Xu and others, 2010) indicates the slope of the trend. A positive slope denotes an increase with time, whereas a negative slope indicates a decrease. The tested significance levels, α , are 0.001, 0.01, 0.05 and 0.1.

Mann–Kendall tests were performed on all historical time series that were found acceptable through the quality control described above. The new discharge measurements were considered in the trend analysis where the number of years between the end of the historical record and the station rehabilitation time was considered as not liable to bias the trend analysis. As a consequence, for datasets that present more than 50% of years with missing data over the 1989–2009 period, the recent measurements are given for information only and are not integrated into the historical time series used for the trend analysis. This criterion, although not 100% selective, was used to ensure the trend analysis quality while keeping time series as long as possible. If significant bias were to still arise from these minor temporal gaps, it would be detected at the model validation stage (see Section 4.4. below).

Mann–Kendall tests were applied at two levels. At the first level, the overall time-series trend was evaluated by considering the complete period of the accepted records. For stations that had a change in the trend, a linear trend characterization would have misrepresented the true rate of parameter change with time. Therefore trends on subsets of the complete time-series segments were analyzed. Possible

minima or maxima in the complete time series were identified where the derivative of the quadratic regression equation (for the different parameters of interest) was zero. A second level of Mann–Kendall linear trend analysis was then applied to sub-periods corresponding to the time before and after the year of trend change. The same procedure was applied to yearly precipitation amounts.

3.3. Trend interpretation model

We related detected measured trends to changes in glacial hydrological influence by using a simple model of water balance. This model generates synthetic hydrographs from the watershed area, the glacierized surfaces, and the annual rate of loss of ice area. The glacierized coverage of a watershed is a critical parameter that generates disparities among basins in hydrological response to glacial retreat (Birsan and others, 2005; Lambrecht and Mayer, 2009; Alford and Armstrong, 2010; Koboltschnig and Schoner, 2010; Viviroli and others, 2010). However, the percentage of glacier area alone is often insufficient to describe glacial influence on stream discharge for a given watershed. The melt component of basin discharge is primarily dependent on the energy balance of snow and ice with different characteristics such as hypsometry, orientation or density (Ohmura, 2001). These factors vary from basin to basin, creating differences in hydrological response to glacier retreat. Here we account for these variations by using the annual rate of ice area loss, γ .

The following water balance equation is used with yearly average values for studied watersheds:

$$Q = \Delta S + PP + GW_{in} - GW_{out} - ET \quad (1)$$

where Q is the stream's outflow, ΔS is the change in water storage over the same period, PP is the yearly volume of precipitation entering the watershed, ET is basin-wide evapotranspiration and GW_{in} and GW_{out} are the groundwater fluxes entering and leaving the watersheds respectively. Considering that all watersheds studied are situated in mountainous environments, we hypothesize that the net watershed groundwater exchange, $GW_{in} - GW_{out}$, is very small compared to the other components of the water balance and can be ignored. The evapotranspiration term includes evaporation from rivers and lakes (ET_{rl}), evaporation from bare soil, vegetative surfaces (ET_{ngl}) and sublimation from ice and snow surfaces (Sub) (adapted from Dingman, 2002). Substituting, Eqn (1) then becomes

$$Q = \Delta S + PP + ET_{rl} - ET_{ngl} - Sub \quad (2)$$

For time series that are several decades long, we consider that the change of water storage is only dependent on glacier volume changes, with other storage variations balancing over decadal time periods. ΔS is therefore assumed to be equivalent to the annual change in glacier volume expressed in water equivalent. To account for the amount of sublimated volume as a factor, the PP term is split into precipitation that falls on a glacierized area and that which reaches the ground in non-glacierized areas:

$$Q = (\Delta V_{gl} + pp A_{gl}) \cdot d_{melt} + (A_T - A_{gl}) \cdot (pp - et_{ngl}) - ET_{rl} \quad (3)$$

where ΔV_{gl} is the interannual change in glacier volume expressed in water equivalent, pp and et_{ngl} are the average depth of precipitation received and the non-glacierized evapotranspiration per unit area respectively, d_{melt} is the

fraction of annually ablated ice (or snow or firm) that is not lost by sublimation and A_{gl} and A_T are the glacierized areas and total watershed areas respectively.

To simplify Eqn (3), we introduce β , a factor that relates V_{gl} to the glacierized area, A_{gl} . Assuming β is constant over time, we can consider

$$\beta = \frac{\Delta V_{gl}}{\Delta A_{gl}^2} = \frac{V_{gl_0}}{A_{gl_0}^2} \quad (4)$$

where V_{gl_0} and A_{gl_0} are the initial ice volume and glacier area respectively.

The annual rate of ice area loss, γ , is the interannual change in glacial area, ΔA_{gl} , divided by the glacial area, A_{gl} , of the previous year. In a time-series context, applying simple algebra to this definition for a given year, n , makes it possible to relate γ_n to $\Delta(A_{gl_n}^2)$ and the glacierized area, A_{gl_n} , to the initial glacier cover A_{gl_0} as follows:

$$\begin{cases} \Delta(A_{gl_n}^2) &= [(1 - \gamma_n)^2 - 1] A_{gl_{n-1}}^2 \\ A_{gl_n} &= A_{gl_0} \prod_{i=2}^n (1 - \gamma_i) \end{cases} \quad (5)$$

Combining Eqns (3–5) leads to the following expression of the annual discharge for a given year, n :

$$\begin{aligned} Q_n = & d_{melt} \left\{ \beta A_{gl_0}^2 \prod_{i=1}^{n-1} (1 - \gamma_i)^2 [(1 - \gamma_n)^2 - 1] + pp_n A_{gl_0} \prod_{i=2}^n (1 - \gamma_i) \right\} \\ & + (pp_n - et_{ngl}) \left[A_T - A_{gl_0} \prod_{i=2}^n (1 - \gamma_i) \right] - ET_{rl} \end{aligned} \quad (6)$$

With Eqn (6) it is possible to estimate the annual average discharge using data on precipitation and glacial retreat, as well as the watershed and initial glacierized surfaces. This assumes that the evapotranspiration terms, ET_{rl} and ET_{ngl} , and the sublimation factor, $(1 - d_{melt})$, do not vary significantly during the study period.

When focusing on the dry season, a distinction is made between fast flow and slow flow for the non-glacierized area of the watershed. Fast flow is defined here as the portion of precipitation that reaches the watershed outlet within a few days of falling, and assumes no loss due to evapotranspiration. Slow flow is defined as water released from the watershed over a time-span longer than a few days, and is assumed to be mainly groundwater-based. Considering that the Cordillera Blanca receives almost no precipitation between June and September, it is assumed that the fast-flow component for the dry season is negligible. The dry-season slow-flow discharge, q_{ngl} , accounts for the water released from groundwater minus the specific evapotranspiration, ET_{ngl} , from non-glacierized areas.

Focusing on the dry season requires accounting for the seasonality of the glacier melt rates. During the dry season, the specific humidity is low, and the vertical water-vapor pressure gradient over the glacier surface is generally positive downward, making conditions favorable for sublimation to occur and decreasing the amount of energy available for total ablation (Winkler and others, 2009). We introduce α , defined as the fraction of annual ablation that occurs during July and August, and use d'_{melt} instead of d_{melt}

to adapt Eqn (6) for dry-season discharge:

$$Q_{d_n} = \alpha d'_{\text{melt}} \left\{ \beta A_{\text{gl}_0}^2 \prod_{i=1}^{n-1} (1 - \gamma_i)^2 [(1 - \gamma_n)^2 - 1] + pp_n A_{\text{gl}_0} \prod_{i=2}^n (1 - \gamma_i) \right\} + q_{\text{ngl}} \left[A_{\text{T}} - A_{\text{gl}_0} \prod_{i=2}^n (1 - \gamma_i) \right] - ET_{\text{rl}} \quad (7)$$

Again it is possible to estimate the average discharge of the dry season using precipitation and the rate of glacial retreat time series, as well as the watershed and initial glacierized surfaces. This assumes that ET_{rl} , q_{ngl} and the sublimation factor, $(1 - d_{\text{melt}})$, do not vary significantly over the study period.

The yearly coefficient of variation of discharge, C_v , is

$$C_v = \frac{\sigma}{Q} = \frac{\sqrt{\sigma_{Q_{\text{melt}}}^2 + \sigma_{Q_{\text{slow}}}^2 + \sigma_{Q_{\text{fast}}}^2 + \Sigma_{\text{cov}}}}{(Q_{\text{melt}} + Q_{\text{slow}} + Q_{\text{fast}})} \quad (8)$$

where Q_{melt} , Q_{slow} and Q_{fast} are the melt, slow-flow and fast-flow components of the yearly average discharge respectively, $\sigma_{Q_{\text{melt}}}$, $\sigma_{Q_{\text{slow}}}$ and $\sigma_{Q_{\text{fast}}}$ are the melt, slow-flow and fast-flow standard deviations and Σ_{cov} describes the sum of flow-types pairs covariance. If we consider the individual coefficient of variation for the three flow components as being constant over the years, the equation is

$$C_v = \frac{\sqrt{(C_{v_{\text{melt}}} Q_{\text{melt}})^2 + (C_{v_{\text{slow}}} Q_{\text{slow}})^2 + (C_{v_{\text{fast}}} Q_{\text{fast}})^2 + \Sigma_{\text{cov}}}}{Q} \quad (9)$$

Based on Eqns (6), (7) and (9), the model generates annual average discharge, dry-season discharge and discharge coefficient of variation for periods greater than 10 years. Due to the diverse assumptions made in the model design, it is expected that the trends in modeled parameters, as well as the final (for $A_{\text{gl}}=0$) versus initial discharge ratios, will be most accurately reproduced.

3.4. Assessing influence of precipitation on discharge trends

Eqns (1–6) indicate it is possible to estimate the annual average discharge using only precipitation and glacial retreat data if we assume that the evaporation- and sublimation-related terms do not vary significantly during the study period. This means that characterizing the impact of glacier retreat on discharge first requires characterizing the influence of precipitation.

A correlation study between the seven precipitation time series at Parón, Llanganuco, Chancos, Huaraz, Querococha, Pachacoto and La Recreta (Pouyaud and others, 2005) was used to assess the spatial homogeneity of precipitation across the region. A trend analysis (described earlier) was also performed on each time series, and the results of both analyses were used to further explore the regional variability and possible regional patterns of yearly precipitation values. We then statistically compared discharge parameters from all studied watersheds to regional precipitation records. When a 'minimal correlation' ($R^2 \geq 0.2$ and p -value ≤ 0.1) was not obtained between Q , Q_{d} , Q_{min} or C_v and the yearly amount of precipitation of the closest measurement points, it was considered that discharge variability cannot be explained by precipitation changes. For all cases where a

minimal correlation was detected, a new trend analysis was performed with the precipitation time series using the same time periods as the corresponding discharge parameter. In cases where significant trends of similar sign (i.e. positive or negative) were detected both in precipitation records and in discharge parameter values, the discharge parameter trend was excluded from the result interpretation.

In addition, to avoid identifying trends related to temporary climatic phenomena that could arise from shortening time series, the discharge dataset was screened for generalized common patterns in measurements. If such a case was detected, corresponding datasets were similarly excluded.

3.5. Estimation of glacier coverage

The published data on glacierized areas by watershed that we considered cover different time periods: (1) 1963–70 and 1997 (Mark and Seltzer, 2003); (2) 1990–91 (Kaser and others, 2003); (3) 1930, 1970 and 1990 (Georges, 2004); and (4) 1948, 1962 and 1973 (for Yanamarey glacier only) (Hastenrath and Ames, 1995). Combining these published data required occasional adjustments to ensure consistent definitions of watershed areas. There are only minor differences in watershed areas between the first two studies, so the calculation of watershed glacial cover was considered comparable for publications 1 and 2. However, the extensive dataset in Georges (2004) features a format that presents glacierized areas by mountain group, rather than by watershed. To accurately compare formats, we first evaluated the proportion of glaciers in the mountain groups of publication 3 that drain into the watersheds of publications 1 and 2, and weighted the published glacierized areas accordingly to derive watershed-based glacier coverage for the same years 1930, 1970 and 1990. The same procedure was applied for the computation of the Querococha watershed glacierized area with publication 4. Overlaps between studies were used to fine-tune the weighted average factors.

Advanced Spaceborne Thermal Emission and Reflection Radiometer (ASTER) satellite imagery was used for recent estimates of glacier area. Despite the lower resolution of ASTER imagery compared to other sources, it has provided an important multitemporal data product to map glacier changes as part of the Global Land Ice Measurements from Space (GLIMS) project, and the Cordillera Blanca has been featured as a specific case example of the GLIMS application (Racoviteanu and others, 2008; Raup and others, 2008). We selected images from 2001–03 and 2009–10 with available images that spanned the entire mountain range. This necessitated compilations of multiple images to obtain cloud-free coverage. For each time period, we computed the amount of glacierized coverage by digitizing glacier boundaries with GIS software. The lower termini were used to evaluate changes in area. Delimiting edges between individual glaciers at the upper regions of watersheds is inherently uncertain given the steep terrain, uniform surface reflectance and limited image resolution. But because our objective was to compute relative changes in glacierized area aggregated by watershed, we did not need to distinguish between individual glaciers. We did not apply ASTER resolution (15 m panchromatic) to define individual glaciers, but rather the changes in total glacier coverage between periods. We calculated the watershed areas using 1:100 000 digitized contours and lakes and rivers from Instituto Geográfico Nacional, Peru. The glacierized area of each watershed was calculated based on the

method and recommendations formulated by Racoviteanu and others (2009).

The resulting glacier coverage data were used to compute the annual rate of ice loss, γ , for each studied watershed. Linear extrapolations were used between the discrete years of published or estimated glacierized areas to estimate the annual values required for the model. The glacier coverage data are used to generate synthetic datasets for model calibration and were limited to the years matching those used for the discharge data trend analysis.

3.6. Model parameterization and validation

The initial parameterization of the model was based on published parameter values (Table 2). When directly applicable parameters were not available, specific parameters were developed to estimate them, such as the factor β that relates the watershed glacierized area, A_{gl} , to its volume, V_{gl} (see Eqn (4)). We used the glacier volume–area power relationship (Bahr, 1997; Bahr and others, 1997) to determine the relationship between the volume of a single glacier and its surface area in the Cordillera Blanca. As tropical glaciers are generally thinner than alpine glaciers due to their relatively high inclination (Kaser and Ostmaston, 2002), the scaling factor of the power equation was computed based on published local volumes and areas. We used published glacier volumes or mass balances for glaciers situated in the tropical Andes in Bolivia (Ramirez and others, 2001; Rabatel and others, 2006; Soruco and others, 2009) and in Peru (Hastenrath and Ames, 1995; Ames and Hastenrath, 1996). Using the scaling exponent of 1.375 suggested by Bahr (1997), the best nonlinear regression result ($R^2 = 0.94$; root-mean-square error = 0.008 km) was obtained with a scaling factor of 0.04088 (Fig. 2).

While valid for individual glaciers, the resulting power relationship is not directly applicable to the model which requires watershed glacierized area. For watersheds with an area of less than 1 km², the ice volume estimation would remain valid, but it would be overestimated for larger glacierized areas that are usually a combination of several individual glaciers. To establish a relation between

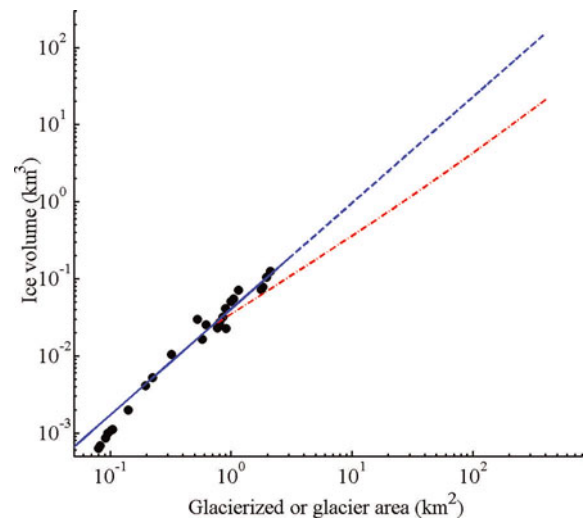


Fig. 2. Ice volume versus glacier area for tropical glaciers of the Andes. Black dots represent measured values from Hastenrath and others (1995), Ames and Hastenrath (1996), Ramirez and others (2001), Rabatel and others (2006) and Soruco and others (2009). The blue line plots the Bahr and others (1997) equation with slope adjusted to fit the measured values. The dashed portion of the blue line corresponds to the projection of the trend outside the regression range. The red curve represents the ice volume evaluated for the glacierized area of a watershed rather than for a single glacier.

individual glaciers and watershed glacierized area thicknesses, we used a simplified version (using three bins) of the area–frequency distribution of the 485 glaciers of the Cordillera Blanca that was established by Racoviteanu and others (2008). We calculated the initial watershed glacierized volumes, V_{glo} , as follows:

$$V_{glo} = \beta A_{glo}^{1.375} = \sum_{i=1}^3 n_i V_{ui} \quad (10)$$

where i is the repartition bin number, n_i is the number of glaciers for bin i , and V_{ui} is the corresponding glacier

Table 2. Initial parameters for the hydrological model. The ‘Range’ column indicates the parameter range used for the model application to different watersheds. No range means that the parameter is constant regardless of watershed

Parameter	Description	Unit	Value	Range	Source	Comment
d_{melt}	Portion of yearly ablated ice not sublimated	–	0.82		Winkler and others (2009)	After adjustment to dry-season definition
d'_{melt}	Portion of dry-season ablated ice not sublimated	–	0.74		Winkler and others (2009)	After adjustment to dry-season definition
e_{tngl}	Non-glacierized area-specific evapotranspiration	mm a ⁻¹	640	300–640	Kalthoff and others (2006)	–
ET_{rl}	Evaporation from rivers and lakes	m ³ d ⁻¹	5000	0–50 000	Baraer and others (2009a)	Value given for the Querococha lake only
α	Dry-season part of annual ablation	–	0.14		Kaser and Georges (1999)	Approximation based on qualitative descriptions
q_{ngl}	Net slow-flow dry-season specific discharge	mm a ⁻¹	200	120–200	Baraer and others (2009b)	Watershed-dependent
Cv_{melt}	Melt component coefficient of variation	–	0.4		Baraer and others (2007)	Calculated from hydrograph separation
Cv_{slow}	Slow-flow coefficient of variation	–	0.5		–	Deduced from sensitivity analysis realized with Eqn (9)
Cv_{fast}	Fast-flow coefficient of variation	–	1.3		Baraer and others (2009a)	–
Σ_{cov}	Sum of covariances	–	0		–	Based on calibration

Table 3. Parameter values and formulas used in the sensitivity analysis scenarios. The 'Median' scenario (a) is the reference scenario. Other letters in parentheses (b–f) refer to the parameter changed for a given scenario

Parameter	A_{gl_0} %	A_T km ²	γ_0	γ_n with $n \in \{1, 2, \dots, 200\}$
'Median' scenario (a)	25	200	0	$\gamma_n = \gamma_{n-1} + 3.5 \times 10^{-6}n$
Variants	50 (b)	1000 (c)	0.005 (d)	$\gamma_n = \gamma_0 + 0.00024n$ (e) $\gamma_n = \gamma_0 + \sin\left(\frac{n}{11} - 0.99\right)/30$ (f)

volume area of the bin compiled from Racoviteanu and other (2008). The β factor is determined from a watershed's initial conditions using Eqn (10) and remains constant during the simulation. The relation between V_{gl_0} and A_{gl_0} that results from the Eqn (10) is plotted in Figure 2.

The initial values of other parameters and the sources used to estimate them are given in Table 2. A limited number of initial parameters (Table 2) were adjusted to obtain the best possible fit between projected and measured variables at the study watersheds. The model's ability to reproduce trends was assessed by comparing model output to the Mann–Kendall results of the measured discharge data. Evaluating the model's ability to situate the final (Q_{end}) versus the initial (Q_0) discharges ratio was not achievable directly, as none of the observed discharge time series covers the complete disappearance of the glaciers. Therefore, we used the stream's yearly discharge in the last year of the time series, Q_n , instead of Q_{end} . The error associated with Q_n/Q_0 ratio estimation was therefore considered greater than those related to Q_{end}/Q_0 .

3.7. Model sensitivity to glacier retreat scenarios

Once calibrated, the model was used for a sensitivity analysis to determine how the key model parameters affect the simulated trend of discharge-related parameters under different scenarios of glacier retreat. Annual precipitation was kept constant across the entire simulation period, based on results of the precipitation trend analysis shown below.

A 'median' scenario was defined, based on a quasi-exponential increase of γ_n and on studied watershed characteristics. Sensitivity analysis was done by comparing this median simulation (scenario a) with five 'variant' scenario outputs (b–f, Table 3), each differing from the median scenario in one parameter only. Because of the numerous ways in which γ_n can vary with n , two variants of the γ_n function were tested: scenario e had a continuous glacial retreat scenario (linear) while scenario f involved more complexity (an oscillating function with periodic negative recession phases and a positive average in the period studied). Simulations were run until the glacier area approached zero and the yearly average discharge stabilized.

The median scenario was also used to explore the notion of phases of glacier retreat as a function of watershed parameters, a useful prognostic used in other studies (e.g. Collins, 2008; Milner and others, 2009; Moore and others, 2009). Four different phases were defined on the basis of significant trend changes that occur in model outputs while the glacier coverage decreases. This classification was subsequently used to categorize the nine different studied watersheds.

3.8. Potential future hydrologic impacts of glacier retreat

To determine how glacier retreat will affect future hydrological regimes, the model was run in a 'rapid-retreat simulation' with a hypothetical extreme rate of glacier retreat. The rapid-retreat initial conditions are comparable to those of our study watersheds in 2009 as opposed to decades ago. The 'median' retreat scenario (scenario a, Table 3) was used as a starting point and more than 2000 Q_0 values were calculated based on combinations of percentage of initial glacierized area cover A_{gl_0} and annual rate of ice area loss, γ_0 . A_{gl_0} ranged from 0.1% to 50%, γ_0 from 0 to 0.04, and watershed area was constant at 200 km². For each of the initial condition combinations, the annual rate of ice area loss, γ , was increased by 1% of glacier area per year until the glacier was completely melted, which was almost 50 times faster than the average γ increase observed at the nine studied watersheds between 1930 and 2009. This hypothetical retreat would generate a meltwater release and a subsequent discharge increase for at least the first simulation year regardless of the initial condition. The magnitude and duration of this simulated increase reflected the capacity of glaciers to further increase the watershed flows. To evaluate this capacity $\int Q^+$, a dimensionless parameter that represents the amount by which the perturbed discharge, Q_i , exceeds initial discharge, Q_0 , was used, and was computed as follows:

$$\int Q^+ = \sum \frac{(Q_i - Q_0)}{Q_0} \text{ for years } i, \text{ where } Q_i > Q_0. \quad (11)$$

Simultaneously, the impact on the watershed annual discharge of a glacier completely melting was evaluated by computing Q_{end}/Q_0 , the final versus initial mean annual discharges ratio. This ratio provides a direct indication of how much the annual discharge will decrease once the glacier disappears compared with that calculated based on initial conditions.

In addition to annual discharges, the rapid-retreat simulations were used to compute $\int Q^+$ and Q_{end}/Q_0 for dry-season discharge.

We estimated the $\int Q^+$ and Q_{end}/Q_0 values for the studied watershed by comparing watershed A_{gl} and γ values calculated for 2009 with the rapid-retreat simulation results. This method of interpretation of simulated results made it possible to qualitatively describe potential future hydrologic impacts of glacier retreat on the studied watersheds.

4. RESULTS AND DISCUSSION

4.1. Changes in glacierized area

The studied watersheds have a wide range of percent glacierized area (Table 4). With 39% in 2009, Parón is the most highly glacierized watershed, while La Recreta is the least glacierized, with 1% the same year. From 1930 to 2009 the percent glacierized area within every watershed decreased. This is confirmed by the γ_{period} values (the annual rate of ice area loss from 1930 to 2009; Table 4) which are all positive for the period studied. The La Balsa watershed, which drains the entire upper Río Santa, has an average of 0.61% a⁻¹ area loss, which is the median for the nine studied watersheds. The Llanganuco and Querococha watersheds exhibit the fastest glacial area reduction, with an average loss of 1% a⁻¹ and 1.1% a⁻¹ respectively. Los Cedros has the

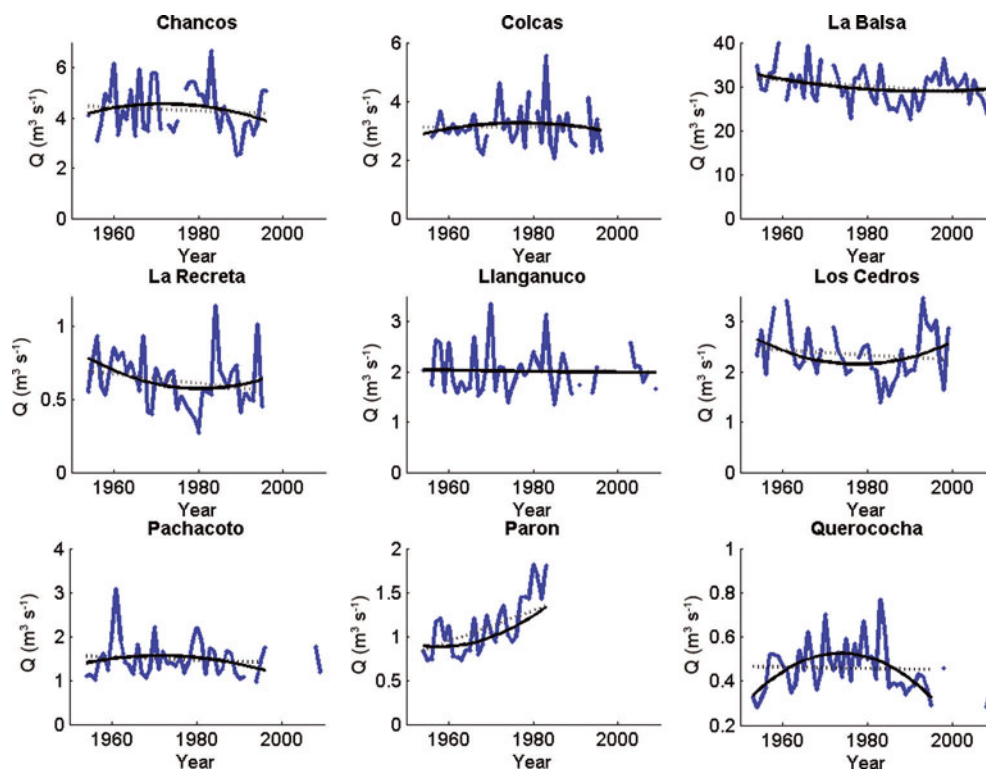


Fig. 3. Dry-season average discharge calculated from daily data (solid blue line). Linear and quadratic regression lines (curves) calculated from datasets are drawn in black dashed lines and full black curves respectively.

lowest γ_{period} , with an average loss of $0.38\% \text{ a}^{-1}$. Except for Colcas, Los Cedros and Parón, there is a clear acceleration in glacierized area reduction across the studied watersheds over the past two decades. The average γ value for the period 1990–2009 was double that for 1930–2009 at Chancos, La Recreta, Pachacoto and Querococha, indicating a probable exponential rate of depletion. La Balsa values confirm this acceleration. The 1990–2009 annual percentage glacier area loss reaches 0.81, which is roughly 30% greater than was measured during the 1930–2009 period.

The recession-rate results provide an internally consistent comparison of changes over time. Our protocol to generate γ time series invokes a level of uncertainty, estimated at around

5% based upon our inclusion of historical estimates of glacierized areas from different sources and comprising different interpretations of glacier areas by different methods (Table 4). Despite these unavoidable limitations, the generated γ time series was considered to be adequate for the purpose of this study because the model simulations generated from these time series are used to compute trend analyses only and the results obtained from these simulations are compared to observed discharges for model validation.

4.2. Trends in discharge parameters

The dry-season average discharge time series are used to illustrate how the studied watersheds evolve hydrologically

Table 4. Glacierized percentage of watershed areas. Years in italics are derived from publications (Kaser and others, 2003; Mark and Seltzer, 2003; Georges, 2004). The others (2002 and 2009) were computed using ASTER satellite imagery. The specific acquisition dates for selected ASTER images were 1 August 2001, 25 May 2002, 17 June 2002, 13 July 2003, 28 May 2009, 11 June 2009, 13 July 2009, 29 July 2009, 7 August 2009 and 29 May 2010. The historical values for Querococha are from Hastenrath and Ames (1995) and cover slightly different time periods indicated in parentheses. γ_{period} and γ_{90-09} represent the average rate of ice area loss for the periods 1930–2009 and 1990–2009 respectively

Watershed	1930	1970	1990	1997	2002	2009	γ_{period}	γ_{90-09}
Chancos	31.1	25	24	22	22.2	19.5	0.0059	0.0108
Colcas	24.4	19.3	17.5	18	19	17.4	0.0043	0.0003
La Balsa	11.7	9	8.4	8	8.1	7.2	0.0061	0.0081
La Recreta	1.6	1.5	1.4		1.1	1	0.0058	0.0161
Llanganuco	55.5	42.6	34		30.8	25.1	0.01	0.0158
Los Cedros	25	21	19	18	19	18.5	0.0038	0.0014
Pachacoto	14	12	10	8	7.1	6.9	0.0089	0.0193
Parón	72	55	47	52	44	38.7	0.0078	0.0064
Querococha	4.6 (1948) 4.1 (1962)	3.9 (1973)	3.7	3	2.8	2	0.011	0.0248

over time (Fig. 3). Overall, the data show a dominant decrease in dry-season average discharge during the study period. An increase in dry-season average is observed with the Parón dataset, a particularity that could be related to the length of the study period for this watershed. No trend is detected in the Llanganuco dry season throughout the study period. There is a decrease in dry-season stream discharge between the 1950s and 1990s for the seven other watersheds. This regionally dominant pattern is also observed in the La Balsa time series which has lost more than 10% of its average dry-season discharge in little more than half a century. This decrease cannot be attributed fully to the change in glacial cover, as other factors (e.g. changes in land use, agricultural practices or population density) also might have affected regional river discharge regimes. However, high-elevation watersheds like Querococha or Pachacoto, where there is low human impact, also present an overall dry-season discharge decrease, suggesting that the change in glacial cover explains, at least partly, the observed dry-season discharge decrease at La Balsa. Four of the watersheds feature a local maximum in polynomial regression curves and four a minimum. No maximum or minimum is detected at Llanganuco. The timing of minima or maxima in polynomial regression curves varies from 1958 for Parón to 1994 for La Balsa. These differences in curve profiles suggest that it is unlikely that trends related to short interannual climatic phenomena would be detected by the Mann–Kendall test.

For Mann–Kendall tests with significance values of 0.1 or lower, the random origin of trends can be excluded, allowing further refinement of the trend analyses (Table 5). With the exception of Parón, all significant discharge trends indicate a decrease in discharge throughout the total period and/or during the second sub-period. On no occasion were contradicting indications observed between Q , Q_d and Q_{min} . At Chancos, Los Cedros and Querococha, the decrease in discharge was preceded by an increase in at least one of the three discharge parameters. This phase ended much earlier (around 1962) at Los Cedros than at the two other locations (1980 and 1975, respectively). On five occasions, C_v presented significant trends. At La Balsa and La Recreta, the results indicate an increase in variability with time, either for the full period of record or at least for one of the sub-periods. The only watersheds where significant decreases in yearly discharge variability were detected are Parón (across the full time series) and Colcas (in the first sub-period). The results show that an increase in discharge is systematically associated with a decrease in variability and vice versa.

For the precipitation records, the trend analysis shows a more heterogeneous situation. Of the seven time series we studied, three exhibit a negative trend and four a positive trend during the 1954–99 period. Chancos and Huaraz both have positive, statistically significant trends. The same disparity is observed for trends analyzed using sub-periods: three (one significant) of the seven time series show a negative trend during the first sub-period, and two (one significant) during the second sub-period. Years of minimum or maximum values differ widely between measurement locations. These results suggest the absence of a clear region-wide trend in precipitation over the study period. This spatial disparity is confirmed by the correlation study performed on the seven precipitation datasets (Table 6). Significant R^2 vary from only 0.09 between Parón and Chancos, to 0.54 between Pachacoto and La Recreta. Most

of the R^2 values are around 0.3, corresponding to a low level of linear correlation. These results are in line with previously published studies that describe unclear trends in regional precipitation data or in projections (Urrutia and Vuille, 2009; Chevallier and others, 2010). Vuille and others (2008a) also describe the lack of a clear trend in precipitation for the Cordillera Blanca area. They report a difference in tendency between regions situated south (a possible decrease) and north (a possible increase) of about 11° S. Situated between $8^\circ 38'$ S and $10^\circ 02'$ S, the Cordillera Blanca lies near the boundary of these two regions. Therefore, since using a single precipitation time series to represent a regional tendency is not possible, time series from the three nearest measurement points are used for comparison to each watershed's discharge parameters.

4.3. Precipitation influence on discharge trends

Results of the correlation study between precipitation records and discharge parameters are reported in Table 7. First, we note that the degree of influence (number and magnitude of detected 'minimal correlations') varies from watershed to watershed. Broadly, the watersheds that present the lowest relative glacierized areas (Table 4) have discharge parameters more correlated to annual precipitation. The degree of influence of precipitation on discharge parameter variation also differs from parameter to parameter. With only one exception (Q_d at La Recreta), Q_d and Q_{min} do not correlate, or correlate weakly, with the precipitation. Correlation with Q and C_v is more established but still weak, as less than 50% of the calculated R^2 values do not reach the minimal correlation level and 75% of those that do are below 0.5. As a general pattern the influence of precipitation on discharge parameter variations is small (Table 7), and mainly affects the less glacierized watersheds. Based on this correlation study, trends in all studied discharge parameters at Colcas and Parón are considered to be free of the influence of precipitation, while at the other watersheds only Q_d and Q_{min} are independent of precipitation (Q_{min} only at La Recreta).

The lack of a regional trend in yearly precipitation amounts, as well as the weak level of correlation that exists between discharge parameters and yearly precipitation, makes it difficult to justify using a precipitation trend to force the model. We therefore fix watershed-specific yearly precipitation values in all model simulations.

4.4. Model validation

Modeled discharge trends were compared with measured discharge trends by counting how often a significant trend detected in measured discharge was reproduced by the model. The results in Table 8 are reported as the percentage of times that both trends were similar for both linear and quadratic regressions. Of the 37 significant trends detected using the Mann–Kendall test, 36 were correctly reproduced by the model for an overall match value of 97%. Despite the uncertainty related to the glacierized area evaluation and the hydro-climatic datasets, the model reproduced the trend of the four different parameters used in the study very satisfactorily. The model performance in estimating the Q_{end}/Q_0 ratios is poorer than in reproducing trends, but its mean absolute error, less than 0.17, is acceptable for the purpose of the study. Evaluating the Q_n/Q_0 ratios correctly is not explicitly required, as the simpler Q_{end}/Q_0 ratio only is used. This validation step did not highlight any deviation

Table 5. Results of Mann–Kendall trend analysis. The ' α ' columns describe the level of significance of the reported trends. Statistically significant trends are in bold

Station	Parameter	Linear regression			Year of min (max)	Quadratic regression			
		Period	Slope	α		Sub-period 1		Sub-period 2	
					Slope	α	Slope	α	
Chancos	Q	1954–96	0.028		1980	0.073	0.1	-0.134	0.05
	Q _d	1954–96	-0.007		1971	0.025		-0.029	
	Q _{min}	1954–96	-0.003		1974	0.028		-0.065	0.05
	Cv	1954–96	0.002		–				
Colcas	Q	1956–97	-0.011		1972	-0.003		-0.073	0.05
	Q _d	1956–97	-0.004		1977	0.01		-0.032	
	Q _{min}	1956–97	-0.011		1971	-0.01		-0.032	0.05
	Cv	1956–97	0.001		1959	-0.052	0.1	0.001	
La Balsa	Q	1954–2008	0.007		1975	0.188		0.449	
	Q _d	1954–2008	-0.065	0.1	1994	-0.163	0.01	-0.406	0.05
	Q _{min}	1954–2008	-0.04		1992	-0.148	0.05	-0.298	
	Cv	1954–2008	0.003	0.05	1970	-0.013		0.006	0.05
La Recreta	Q	1954–95	-0.028	0.1	–				
	Q _d	1954–95	-0.005	0.05	1980	-0.014	0.01	-0.014	0.01
	Q _{min}	1954–95	-0.004	0.01	1984	-0.007	0.01	-0.011	0.1
	Cv	1954–95	0.001		1976	0.01	0.1	-0.004	
Llanganuco	Q	1954–2009	0.003		1988	0.019	0.01	-0.02	0.1
	Q _d	1954–2009	0		–				
	Q _{min}	1954–2009	0		–				
	Cv	1954–2009	-0.001		–				
Los Cedros	Q	1954–99	-0.006		1970	0.04		-0.009	
	Q _d	1954–99	-0.006		1979	-0.017		0.037	
	Q _{min}	1954–99	-0.013	0.01	1962	0.15	0.05	-0.018	0.001
	Cv	1954–99	0.001		1956			0.001	
Pachacoto	Q	1954–96	-0.015		1962	0.149	0.05	-0.021	
	Q _d	1954–96	-0.001		1971	0.006		-0.012	
	Q _{min}	1954–96	0.001		1972	0.018		-0.014	
	Cv	1954–96	0		1976	-0.01		0.007	
Parón	Q	1954–83	0.023	0.01	1962	0.019		0.046	0.001
	Q _d	1954–83	0.025	0.001	1958	0.1		0.029	0.001
	Q _{min}	1954–83	0.024	0.001	1958	0.111		0.029	0.001
	Cv	1954–83	-0.006	0.001	–				
Querococha	Q	1953–95	0.002		1975	0.018	0.05	-0.012	
	Q _d	1953–95	-0.001		1974	0.006		-0.009	0.01
	Q _{min}	1953–95	0		1975	0.008	0.01	-0.01	0.01
	Cv	1953–95	0.001		1972	-0.004		0.003	
Precipitation	Parón	1954–99	-2.729		1981	-10.163	0.1	2.800	
	Llanganuco	1954–99	0.580		1969	19.800		2.187	
	Chancos	1954–99	2.386	0.1	–	2.386			
	Huaraz	1954–99	6.305	0.01	1990	7.818	0.01	30.450	0.1
	Querococha	1954–99	0.878		1978	12.226	0.05	-16.392	0.05
	Pachacoto	1954–99	-1.066		1988	-0.495		-9.529	

Table 6. Coefficient of determination (R^2) and statistical significance (p -value) calculated for the seven precipitation time series. R^2 values appear below the oblique line, p -values above. R^2 values equal to or over 0.2 associated with a p -value under 0.1 are in bold

$R^2 \setminus p$ -value	Parón	Llanganuco	Chancos	Huaraz	Querococha	Pachacoto	La Recreta
Parón		0.0163	0.0438	0.0142	0.0434	0.0001	0.0001
Llanganuco	0.13		0.0001	0.0019	0.0013	0.0001	0.0001
Chancos	0.09	0.30		0.0001	0	0.0001	0.0001
Huaraz	0.13	0.20	0.29		0	0	0
Querococha	0.09	0.22	0.38	0.51		0	0.0001
Pachacoto	0.31	0.30	0.31	0.35	0.40		0
La Recreta	0.30	0.29	0.32	0.37	0.29	0.54	

Table 7. Coefficients of determination (R^2) and their associated statistical significance (p -value) calculated between the precipitation records from the three closest measurement points and the discharge parameters of each gauging station. R^2 values equal to or over 0.2 associated with a p -value above 0.1 are in bold

Station	Precipitation measurement point	Q		Q _d		Q _{min}		Cv	
		R^2	p -value	R^2	p -value	R^2	p -value	R^2	p -value
Chancos	Llanganuco	0.00	0.9491	0.01	0.661	0.01	0.5929	0.06	0.1417
	Chancos	0.10	0.0589	0.00	0.9826	0.00	0.8997	0.07	0.1199
	Huaraz	0.15	0.0183	0.00	0.8897	0.02	0.3476	0.17	0.0106
Colcas	Parón	0.02	0.4537	0.04	0.2788	0.03	0.2895	0.22	0.005
	Llanganuco	0.00	0.751	0.01	0.4965	0.04	0.2447	0.19	0.0082
La Balsa	Chancos	0.06	0.1547	0.04	0.2678	0.00	0.8953	0.00	0.9736
	Chancos	0.24	0.001	0.01	0.6441	0.00	0.7952	0.18	0.0068
	Huaraz	0.32	2×10⁻⁴	0.00	0.9639	0.00	0.9126	0.33	10⁻⁴
La Recreta	Querococha	0.09	0.0584	0.00	0.7185	0.01	0.5549	0.08	0.0748
	Querococha	0.39	0	0.13	0.0261	0.02	0.347	0.17	0.0091
	Pachacoto	0.61	0	0.39	0	0.13	0.0263	0.15	0.0131
Llanganuco	La Recreta	0.67	0	0.37	0	0.13	0.0219	0.05	0.1547
	Parón	0.05	0.2007	0.03	0.3251	0.01	0.5263	0.13	0.0238
	Llanganuco	0.01	0.4672	0.03	0.3265	0.08	0.0871	0.33	2×10⁻⁴
Los Cedros	Chancos	0.11	0.0397	0.01	0.5515	0.00	0.7421	0.11	0.0414
	Parón	0.03	0.2572	0.00	0.7115	0.00	0.8282	0.07	0.0967
	Llanganuco	0.33	10⁻⁴	0.07	0.0981	0.02	0.341	0.23	0.002
Pachacoto	Chancos	0.19	0.005	0.05	0.1857	0.00	0.9562	0.45	0
	Querococha	0.32	2×10⁻⁴	0.02	0.4479	0.01	0.5795	0.10	0.0528
	Pachacoto	0.51	0	0.02	0.346	0.03	0.3189	0.23	0.002
Parón	La Recreta	0.55	0	0.03	0.3048	0.03	0.2737	0.16	0.0131
	Parón	0.17	0.0287	0.16	0.0378	0.19	0.0216	0.10	0.1018
	Llanganuco	0.04	0.3303	0.12	0.0738	0.13	0.0592	0.17	0.0272
Querococha	Chancos	0.10	0.1051	0.05	0.2697	0.04	0.3013	0.03	0.3557
	Huaraz	0.40	0	0.04	0.2344	0.17	0.0075	0.13	0.0217
	Querococha	0.68	0	0.04	0.2301	0.13	0.0199	0.26	7×10⁻⁴
	Pachacoto	0.49	0	0.02	0.3719	0.00	0.7775	0.23	0.002

that would characterize dataset bias related to gaps in the historical data. This supports the assumption made earlier that these gaps did not generate mis-estimation of the trends.

4.5. Model simulations

To test the model sensitivity, six synthetic sets of time series were generated. The median scenario (Fig. 4a) visually

conforms to the expected hydrologic progression (see citations in section 3). While the glacier area is continually decreasing, both the annual average discharge and the dry-season discharge experience a period of increase followed by a period of decrease and then a period of stabilization below the initial levels. The ending dry-season discharge is approximately 50% lower than at the beginning, while the

Table 8. Model performance evaluation. The 'Linear trends' and 'Quad. trends' columns provide a comparison of the number of observed (Obs.) significant trends in the time series and the number of matching trends in the modeled results (Mod.) for linear and quadratic regressions respectively. The ' Q_n/Q_0 ' column shows the error calculation components for the Q_n/Q_0 ratios

Station	Linear trends		Quad. trends		Q_n/Q_0		Error
	Obs.	Mod.	Obs.	Mod.	Obs.	Mod.	
Chancos	0		3	3	1.22	0.97	-0.25
Colcas	0		3	3	0.88	0.89	0.01
La Balsa	2		4	4	1.06	0.93	-0.13
La Recreta	3		5	5	0.66	1.00	0.34
Llanganuco	0		2	2	1.05	0.91	-0.14
Los Cedros	1		2	2	0.94	0.99	0.05
Pachacoto	0		1	1	0.84	1.01	0.17
Parón	4	3*	3	3	1.42	1.05	-0.38
Querococha	0		4	4	1.06	1.01	-0.05
	match = 90%		match = 100%		MAE [†]	0.17	
	match overall = 97%						

*The linear negative trend in the coefficient of variability of discharge for the Parón dataset was incorrectly replicated.

†Mean absolute error.

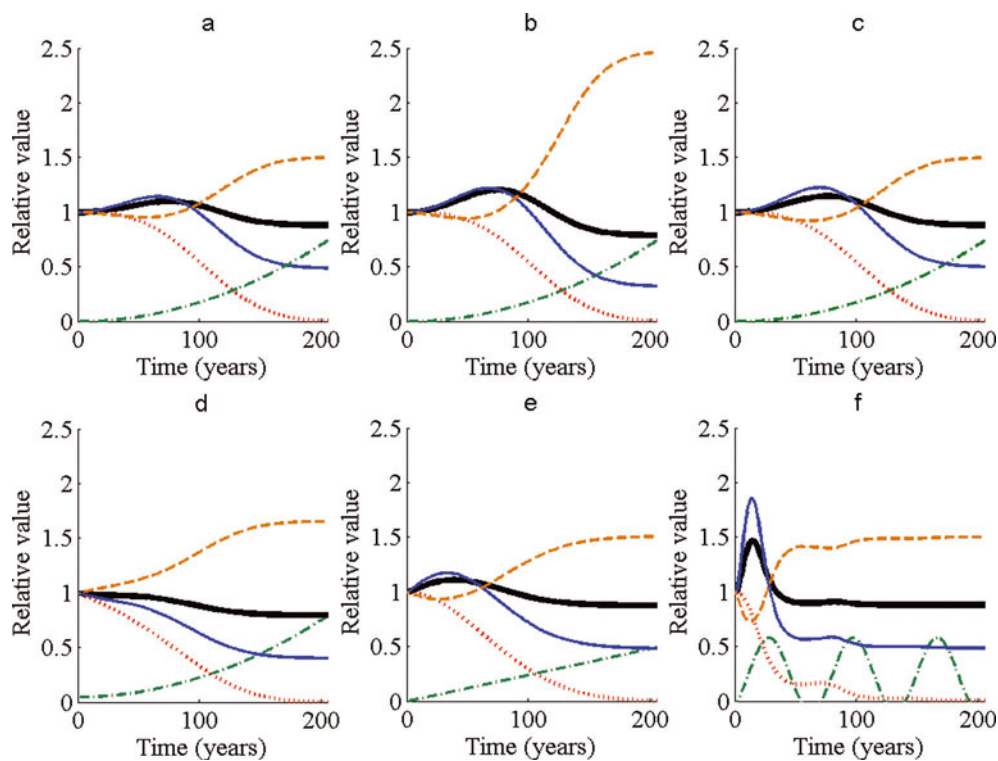


Fig. 4. Results of sensitivity analysis simulation. The thick black lines and the blue lines are the mean annual and dry-season discharge respectively, the yellow dashed line is the annual discharge coefficient of variation, the red dotted line is the glacierized area and the green dash-dotted line is the applied annual rate of glacier area loss. All parameters are given relative to year zero values. (a) presents the 'Median' scenario output, while the other five graphs are variants described in Table 3: (b) A_{gl_0} increase; (c) A_T increase; (d) γ_0 increase; (e) linear γ_n increase; and (f) oscillating γ_n .

ending annual average discharge declines by no more than 10% of its initial level. The maximum dry-season discharge occurs approximately 10 years before the maximum annual average discharge. The period of increasing discharge is shorter than the decreasing and stabilization periods combined. In contrast to what was observed for average discharge, the coefficient of variation first decreased slightly for more than 50 years and then increased rapidly until it stabilized at a value that is approximately 50% higher.

When the same simulation is run with a higher initial glacierized area (Fig. 4b), we see an important change in the amplitude of the output parameters' variation. The variation tempo remains similar to that obtained using scenario a, but all the minima are lower and the maximum is higher with scenario b. This is visually evident in the case of the coefficient of variation whose final value is approximately 150% that of scenario a. The difference in scenario c (Fig. 4c) is less pronounced. Although a change in amplitude is observed, it is minor if we consider that the watershed area is five times that of scenario a. Starting with an initial annual glacier area loss of 0.5% instead of 0 (Fig. 4d) leads to a much greater difference. None of the discharge values shows a period of increase, while the coefficient of variation increases continuously. End values are different from those achieved with scenario a as mean annual and dry-season discharges end lower, while the coefficient of variation is higher.

Changing the annual rate of glacier area loss to a linear function (Fig. 4e) does not affect the end values. For this case, the rate of change is affected, with maximum discharge values (minimum for Cv) occurring earlier than in scenario a. These extreme values are of slightly higher amplitude as well. Similarly, the last tested scenario (Fig. 4f)

preserves the end values computed with scenarios a, c and e but amplifies the intermediate fluctuation. The amplification, which is caused by an extreme glacier area loss applied to the first 30 years of the simulation, is the largest observed among the six datasets. The strong model response to the first γ_n increase wave is not replicated in the second and third waves. Peaks in the discharge average and coefficient of variation are of low amplitude in the second wave and not detectable in the third.

Overall, the sensitivity analysis shows that the watershed area has the least effect on the simulations. It supports the hypothesis that not only is A_{gl_0} critical to determining how glaciers influence a watershed's hydrology, but also that γ , the rate of glacier area loss, is critical. Regardless of scenario, the complete disappearance of glaciers always led to a decrease in annual discharge, an even greater decrease in dry-season discharge and an increase in variability. The sequence of a single increase followed by a decrease in discharge is for continuous retreat scenarios. With a fluctuating glacier area (scenario f), local minima and maxima are simulated but the hydrological response decreases and approaches zero as the glacier area decreases.

We used the 'median' scenario, which is based on a quasi-exponential increase of γ_n and on the studied watersheds' characteristics, to depict typical hydrological impact phases (Fig. 5). The evolution of hydrological parameters under the 'median' glacier retreat scenario enables us to distinguish four impact phases. Phase one, the early stages of deglaciation, is characterized by a smooth increase in dry-season and yearly average discharge due to a smooth initial deglaciation and ends when the coefficient of variation reaches its minimum. In phase two, the increase in annual

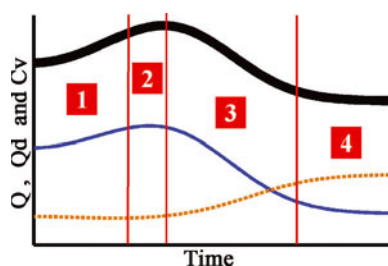


Fig. 5. 'Typical' glacier retreat hydrological impact phases (delimited and labelled in red). The thick black line and the blue line represent the mean annual and dry-season discharge respectively, and the yellow dashed line corresponds to the annual discharge coefficient of variation. As the phases are conceptual, axes are kept unit-free.

average discharge slows until it reaches its maximum while the dry-season discharge increases and then declines and the coefficient of variation begins to increase. Phase three starts from the maximum average annual discharge and covers the pronounced decline in discharges and the corresponding increase in the coefficient of variation. Phase four includes the end of the glacier influence on outflows when changes in

discharges are progressively less pronounced, asymptotically reaching a non-glacierized basin state.

This four-phase sequence is based on a continuously increasing rate of ice area loss. As observed in the sensitivity analysis, deviations from this path may change the phase sequence. However, the probability of this occurring decreases as we move away from highly glacierized conditions. Returning to a phase two from a late phase three or a phase four would necessitate either extremely high rates of deglaciation or a new long-term glacial expansion. The likelihood of this happening is not supported by recent climate change projections (Urrutia and Vuille, 2009).

Each watershed is interpreted individually by comparing the significant trends in measured discharge to the definition of the impact phase (Table 9). This interpretation applies to the final year of observations used in the trend analysis. Significant trends in discharge parameters that show possible influence from precipitation data (three in total) are excluded from the phase allocation exercise (described above in Section 3.4). Results from the phase determination suggest that seven of the nine studied watersheds are in impact phase three. One watershed, La Recreta, shows characteristics of phase four, and another,

Table 9. Trends associated with the 'typical' glacier retreat model compared to measured trends. The symbols used for trend description are '+' for an increase, '-' for a decrease, '+,-' for an increase followed by a decrease, and '-,0' for a decrease followed by parameter stabilization. The 'Phases' rows summarize phase definitions. Reproduced watershed data are indicated for statistically significant trends only (Table 5). In case of trends that were split by quadratic regression, the year separating the two sub-periods is given in parentheses. Trends excluded from the phase allocation due to possible precipitation influence are in gray. The cause of rejection is presented in the 'Possible precipitation influence' column. The watershed names are followed by the year to which the interpretation statement applies

		Q	Q _d	Q _{min}	Cv	Possible precipitation influence	Phases No.
Phases	1	+	+	+	-		
	2	+	>+,-	+,-	+		
	3	-	-	-	+		
	4	-,0	-,0	-,0	+,0		
Chancos, 1996	linear						2 until 1980, then phase 3
	quad.1	+(1980)					
	quad.2	-(1980)		-(1974)			
Colcas, 1996	linear						1 until 1959, and 3 from 1972
	quad.1				-(1959)		
	quad.2	-(1972)		-(1971)			
La Balsa, 2008	linear		-		+	Cv / Huaraz	3 from 1970
	quad.1		-(1994)	-(1992)			
	quad.2		-(1994)		+(1970)		
La Recreta, 1995	linear	-	-	-			3 and possibly 4 from 1982
	quad.1		-(1980)	-(1984)	+(1976)	Q _d / La Recreta	
	quad.2		-(1980)	-(1984)			
Llanganuco, 2009	linear						2 until 1988, then 3
	quad.1	+(1988)					
	quad.2	-(1988)					
Los Cedros, 1999	linear			-			3 since 1962
	quad.1			+(1962)			
	quad.2			-(1962)			
Pachacoto, 1996	linear						Possibly 3 since 1962
	quad.1	+(1962)					
	quad.2						
Parón, 1983	linear	+	+	+	-		1
	quad.1						
	quad.2	+(1962)	+(1958)	+(1958)			
Querococha, 1995	linear						2 until 1976, then 3
	quad.1	+(1975)		+(1975)		Q / Querococha	
	quad.2		-(1976)	-(1976)			

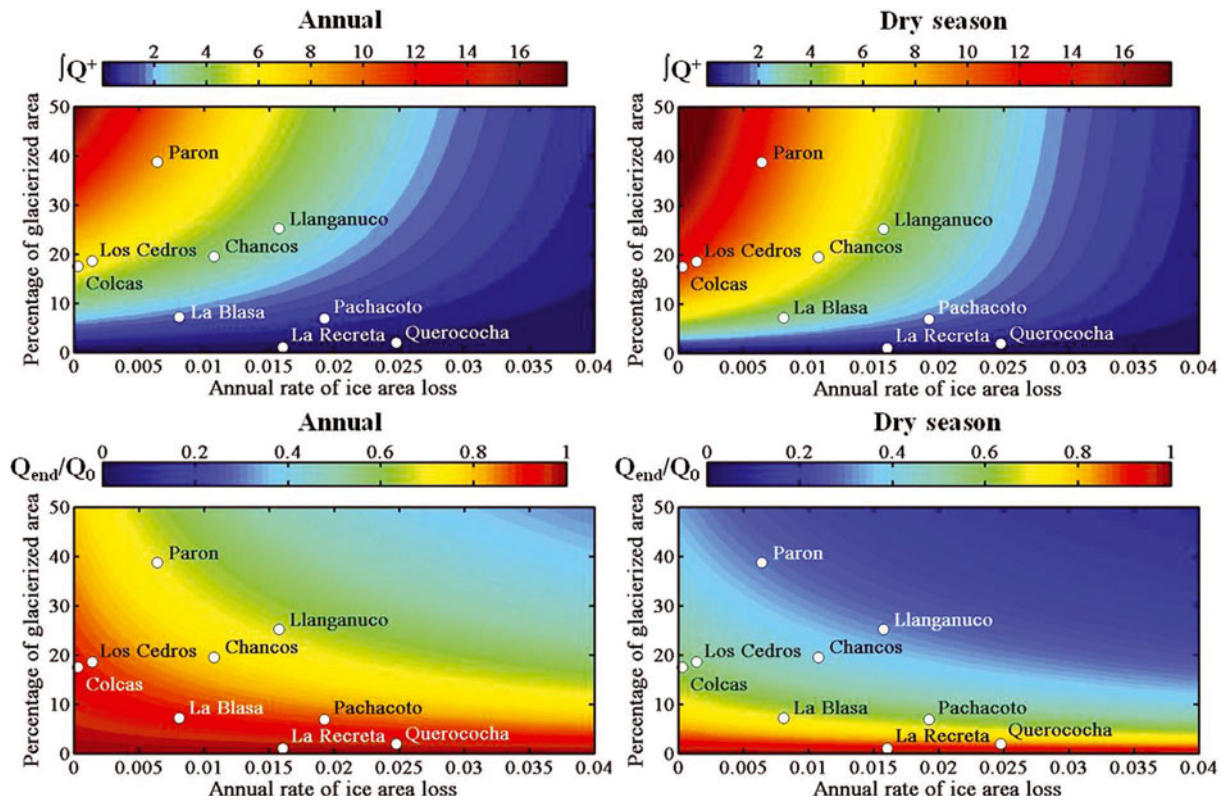


Fig. 6. Variations of $\int Q^+$ (top graphs) and Q_{end}/Q_0 (bottom graphs) for the rapid-retreat simulations, as a function of percentage of glacierized area and the annual rate of ice area loss. Colors represent values of $\int Q^+$ (indicator of the glacier's capacity to further increase the watershed flows) and of Q_{end}/Q_0 (starting and ending simulated discharge ratio). Full year simulations appear on the left, and dry-season simulations are reported at the right. All parameters are dimensionless.

Parón, is still in phase one at the end of the studied discharge time series. With an overall linear regression-based decrease in dry-season discharge, La Balsa exhibits watershed characteristics of phase three. A transition from phase two possibly occurred around 1970, the year in which the increase in C_v becomes significant based on the quadratic regression-based analysis, although this possibility is not confirmed by other parameters. The fact that, on the second sub-period, an increase in C_v is measured in parallel to the dry-season discharge reduction is an indication that glacial factors are at least partially the cause for the measured decrease in discharge.

None of the 38 measured significant trends used in this study contradicted each other in phase allocation, confirming the model's ability to simulate the impact of long-term glacier retreat on regional stream discharge trends.

4.6. Glaciers' potential to further influence hydrological regimes

The rapid-retreat simulation results relate $\int Q^+$ and Q_{end}/Q_0 values to initial A_{gl_0} and γ_0 conditions (Fig. 6). $\int Q^+$ values are relative, as the highest values represent a high potential for generating further increase in discharge, and the lowest values a low potential. $\int Q^+$ values vary from 0 to 18. The lowest values (0–1) represent an almost negligible capacity of a glacierized area to generate a significant flow increase even under the extreme retreat rates used in this set of simulations. In contrast, the highest values characterize watersheds where discharge parameters are highly sensitive to changes in glacier retreat path. Q_{end}/Q_0 values vary from 0.1 to 1. The lowest values, obtained for the dry season,

represent drastic stream discharge reductions while values above 0.9 will have a low impact on water resources.

The results show the critical role of γ_0 in a glacierized watershed's response to glacial retreat, especially for glacial cover greater than 5%. A watershed that has a 25% glacierized area, for example, shows annual $\int Q^+$ values that range from almost 0 to 10, depending on the value of γ_0 , and is even more pronounced when only the dry season is considered. The same situation is observed with the Q_{end}/Q_0 ratio where changes in γ_0 can decrease the projected loss in discharge once the glacier is melted by more than 40%.

We estimate the studied watersheds' $\int Q^+$ and Q_{end}/Q_0 values by comparing their characteristics to the rapid-retreat scenarios (Fig. 6). With the lowest $\int Q^+$ values, La Recreata's and Querococha's discharge should not experience a glacierized area-loss-related measurable increase in annual or dry-season discharge. Once the glaciers have completely disappeared, the discharge at La Recreata should remain almost unchanged compared to the present level, while Querococha should exhibit a slight dry-season decline.

Future glacier influence should be slightly greater for Pachacoto, even if there is a low probability of an increase in melt-related average discharge. The main difference between Querococha and Pachacoto is in their dry-season Q_{end}/Q_0 ratios, which are about 0.8 and 0.6 respectively.

In the long term, Parón is the watershed that should experience the most drastic glacier retreat impact. Not only do its glaciers present the highest potential to generate retreat-related discharge increases at yearly and dry-season levels, but with the complete disappearance of glaciers the dry-season discharge could decline to less than 40% of its

present level. Yearly discharge averages would also decrease, but to about 70% of their present level.

Colcas and Los Cedros have almost the same glacierized area percentage and annual rates of ice area loss. These two watersheds have $\int Q^+$ values that are among the highest, although their Q_{end}/Q_0 ratios are close to the average. These characteristics suggest that the potential for an increase in discharge is among the highest, but that the drop in flows after the glaciers have receded will be less drastic than for Chancos or Llanganuco, the latter being predicted to decrease by more than 60% compared with the actual dry-season regime. Plots of La Balsa $\int Q^+$ values and Q_{end}/Q_0 ratios vary between extremes. When a full year is considered, the potential to further increase discharge due to glacier retreat acceleration is very low. Similarly, the Q_{end}/Q_0 ratio remains high, around 0.9, for the full year average. The dry-season situation is different, as the $\int Q^+$ value for La Balsa is average while the Q_{end}/Q_0 ratio is approximately 0.7. A loss of 30% of the dry-season discharge at that station would not be without consequences, especially when considering that, on some occasions, the Río Santa almost dries up before it reaches the Pacific Ocean.

5. CONCLUSION

Glaciers are major components of the hydrological system in many tropical Andean watersheds, making their ongoing retreat a threat to water resources. Predicting the exact consequences of glacial retreat is difficult due to the complexity and scales of the processes involved. Our ASTER-based measurements of recent glacier changes indicate that glacier recession is accelerating in the Río Santa upper watershed, with the overall glacierized area decreasing annually by 0.81% between 1990 and 2009.

To assess past and present influences of glaciers on stream discharge, we reanalyzed historical and modern discharge data from the Cordillera Blanca. Using a combination of regression and trend analyses, we found statistically significant indications that these systems have crossed a critical threshold, and now exhibit decreasing annual and dry-season discharge. La Balsa station, which measures discharge from the upper Río Santa, is undergoing a decline in dry-season flow that probably began during the 1970s. The weak correlation that exists between the discharge parameters and precipitation supports the hypothesis that these trends are driven by the glacier retreat measured during the same period.

The link between glacial retreat and water resources is analyzed by the use of a simple water balance model. It simulates how glacier retreat can influence the annual and dry-season discharge, as well as the annual discharge variability, and reveals four impact phases of the resulting hydrological changes. Examining historical records and fitting them to these phases suggests a declining contribution of meltwater to the studied watershed outflows. At some watersheds, like Querococha, La Recreta, Pachacoto and La Balsa, the decline in discharge is likely not reversible. The decrease in the dry-season discharge should therefore continue for many decades as the watersheds enter an asymptotic decrease phase prior to the glaciers' complete loss of influence on hydrologic regimes. Once the glaciers are completely melted, the discharge will likely be lower than today. In particular, dry-season discharge may decrease

more than 60% from present for Parón and Llanganuco. At La Balsa, dry-season average discharge should decline to 70% of current levels.

The model sensitivity analysis confirms that the initial glacierized area is a major driver of glacier influence on hydrology. It also shows that, unlike the total watershed area, annual rate of ice area loss is as important as the initial glacierized area.

Although the upper Río Santa watershed still has, and should maintain, abundant water resources when annual total discharge is considered, the dry-season situation is clearly different. A decline in dry-season surface water availability has probably already begun and should continue. Considering the vulnerability of the local population to climate change and declining water resources (Bury and other, 2011), our results can represent a future social, ecological and economic concern.

Despite the overall consistency of the results of the present research, it must be recognized that they may possibly be influenced by uncertainty related to data interpolation and glacierized area estimation. The method we used is promising and could potentially be applied to other regions of the world. However, the findings that result from its application to the Cordillera Blanca need to be confirmed by other means. In addition, the method's accuracy should be further tested through future studies.

ACKNOWLEDGEMENTS

We are grateful for the historical discharge information provided by Abel Rodriguez and Duke Energy, Peru, and for the funding provided by the US National Science Foundation (BCS-0752175), The Ohio State University's Climate, Water and Carbon Program, and McGill University. We thank Robert Carver for insightful comments.

REFERENCES

- Alford D and Armstrong R (2010) The role of glaciers in stream flow from the Nepal Himalaya. *Cryos. Discuss.*, **4**(2), 469–494
- Ames A and Hastenrath S (1996) Diagnosing the imbalance of Glacier Santa Rosa, Cordillera Raura, Peru. *J. Glaciol.*, **42**(141), 212–218
- Bahr DB (1997) Global distributions of glacier properties: a stochastic scaling paradigm. *Water Resour. Res.*, **33**(7), 1669–1679
- Bahr DB, Meier MF and Peckham SD (1997) The physical basis of glacier volume–area scaling. *J. Geophys. Res.*, **102**(B9), 20 355–20 362
- Baraer M, McKenzie JM, Mark BG and Palmer S (2007) An integrated hydrochemical and hydrological approach to modeling runoff in glacier-fed basins, Cordillera Blanca, Peru. In *Glaciers in Watershed and Global Hydrology. International Commission for Snow and Ice Hydrology Workshop, 27–31 August 2007, Obergurgl, Austria* [Abstract]
- Baraer M, McKenzie JM, Mark BG, Bury J and Knox S (2009a) Characterizing contributions of glacier melt and groundwater during the dry season in a poorly gauged catchment of the Cordillera Blanca (Peru). *Adv. Geosci.*, **22**, 41–49
- Baraer M, McKenzie JM, Mark BG and Knox S (2009b) Nature and variability of water resources in the Río Santa upper watershed, Peru [Abstr. H74A-01]. In *AGU–CGU Joint Assembly, 24–27 May 2009, Toronto, Ontario, Canada*. American Geophysical Union, Washington, DC (<http://adsabs.harvard.edu/abs/2009AGUSM.H74A..01B>)

- Barnett TP, Adam JC and Lettenmaier DP (2005) Potential impacts of a warming climate on water availability in snow-dominated regions. *Nature*, **438**(7066), 303–309
- Birsan M-V, Molnar P, Burlando P and Pfaundler M (2005) Streamflow trends in Switzerland. *J. Hydrol.*, **314**(1–4), 312–329
- Bradley RS, Vuille M, Diaz HF and Vergara W (2006) Threats to water supply in the tropical Andes. *Science*, **312**(5781), 1755–1756
- Braun LN, Weber M and Schulz M (2000) Consequences of climate change for runoff from Alpine regions. *Ann. Glaciol.*, **31**, 19–25
- Brown LE, Milner AM and Hannah DM (2010) Predicting river ecosystem response to glacial meltwater dynamics: a case study of quantitative water sourcing and glaciality index approaches. *Aquat. Sci.*, **72**(3), 325–334
- Bury JT and 7 others (2011) Glacier recession and human vulnerability in the Yanamarey watershed of the Cordillera Blanca, Peru. *Climatic Change*, **105**(1–2), 179–206
- Chevallier P, Pouyau B, Suarez W and Condom T (2010) Climate change threats to environment in the tropical Andes: glaciers and water resources. *Reg. Environ. Change*, **11**, Suppl. 1, 179–187
- Collins DN (2008) Climatic warming, glacier recession and runoff from Alpine basins after the Little Ice Age maximum. *Ann. Glaciol.*, **48**, 119–124
- Collins DN and Taylor DP (1990) Variability of runoff from partially-glacierised alpine basins. *IAHS Publ.* 193 (Symposium at Lausanne 1990 – *Hydrology in Mountainous Regions I: Hydrological Measurements; the Water Cycle*), 365–372.
- Dingman SL (2002) *Physical hydrology* 2nd edn. Waveland Press, Long Grove, IL
- Georges C (2004) 20th century glacier fluctuations in the tropical Cordillera Blanca, Peru. *Arct. Antarct. Alp. Res.*, **36**(1), 100–107
- Hagg W and Braun L (2005) The influence of glacier retreat on water yield from high mountain areas: comparison of Alps and central Asia. In De Jong C, Ranzi R and Collins D eds. *Climate and hydrology in mountain areas*. Wiley, Chichester, 263–275
- Hannah DM, Sadler JP and Wood PJ (2007) Hydroecology and ecohydrology: a potential route forward? *Hydrol. Process.*, **21**(24), 3385–3390
- Hastenrath S and Ames A (1995) Diagnosing the imbalance of Yanamarey Glacier in the Cordillera Blanca of Peru. *J. Geophys. Res.*, **100**(D3), 5105–5112
- Hirsch RM and Slack JR (1984) A nonparametric trend test for seasonal data with serial dependence. *Water Resour. Res.*, **20**(6), 727–732
- Hofer M, Mölg T, Marzeion B and Kaser G (2010) Empirical–statistical downscaling of reanalysis data to high-resolution air temperature and specific humidity above a glacier surface (Cordillera Blanca, Peru). *J. Geophys. Res.*, **115**(D12), D12120 (doi: 10.1029/2009JD01255)
- Huss M, Farinotti D, Bauder A and Funk M (2008) Modelling runoff from highly glacierized alpine drainage basins in a changing climate. *Hydrol. Process.*, **22**(19), 3888–3902
- Huss M, Jouvét G, Farinotti D and Bauder A (2010) Future high-mountain hydrology: a new parameterization of glacier retreat. *Hydrol. Earth Syst. Sci.*, **14**(5), 815–829
- Jansson P, Hock R and Schneider T (2003) The concept of glacier storage: a review. *J. Hydrol.*, **282**(1–4), 116–129
- Juen I, Kaser G and Georges C (2007) Modelling observed and future runoff from a glacierized tropical catchment (Cordillera Blanca, Perú). *Global Planet. Change*, **59**(1–4), 37–48
- Kalthoff N and 6 others (2006) The energy balance, evapotranspiration and nocturnal dew deposition of an arid valley in the Andes. *J. Arid Environ.*, **65**(3), 420–443
- Kaser G and Georges C (1999) On the mass balance of low latitude glaciers with particular consideration of the Peruvian Cordillera Blanca. *Geogr. Ann.*, **81A**(4), 643–651
- Kaser G and Osmaston H. (2002) *Tropical glaciers*. Cambridge University Press, Cambridge
- Kaser G, Juen I, Georges C, Gomez J and Tamayo W (2003) The impact of glaciers on the runoff and the reconstruction of mass balance history from hydrological data in the tropical Cordillera Blanca, Peru. *J. Hydrol.*, **282**(1–4), 130–144
- Kaser G, Grosshauser M and Marzeion B (2010) Contribution potential of glaciers to water availability in different climate regimes. *Proc. Natl. Acad. Sci. USA (PNAS)*, **107**(47), 20223–20227
- Kistin EJ, Fogarty J, Pokrasso RS, McCally M and McCornick PG (2010) Climate change, water resources and child health. *Arch. Disease Childh.*, **95**(7), 545–549
- Koboltschnig GR and Schöner W (2010) The relevance of glacier melt in the water cycle of the Alps: an example from Austria. *Hydrol. Earth Syst. Sci. Discuss.*, **7**(3), 2897–2913
- Kundzewicz ZW and 6 others (2005) Trend detection in river flow series: 1. Annual maximum flow. *Hydrol. Sci. J.*, **50**(5), 797–810
- Lambrecht A and Mayer C (2009) Temporal variability of the non-steady contribution from glaciers to water discharge in western Austria. *J. Hydrol.*, **376**(3–4), 353–361
- Mann HB (1945) Nonparametric tests against trend. *Econometrica*, **13**(3), 245–259
- Marengo JA (1995) Variations and change in South American streamflow. *Climatic Change*, **31**(1), 99–117
- Mark BG and McKenzie JM (2007) Tracing increasing tropical Andean glacier melt with stable isotopes in water. *Environ. Sci. Technol.*, **41**(20), 6955–6960
- Mark BG and Seltzer GO (2003) Tropical glacier meltwater contribution to stream discharge: a case study in the Cordillera Blanca, Peru. *J. Glaciol.*, **49**(165), 271–282
- Mark BG, McKenzie JM and Gómez J (2005) Hydrochemical evaluation of changing glacier meltwater contribution to stream discharge: Callejon de Huaylas, Peru. *Hydrol. Sci. J.*, **50**(6), 975–987
- Mark BG, Bury J, McKenzie JM, French A and Baraer M (2010) Climate change and tropical Andean glacier recession: evaluating hydrologic changes and livelihood vulnerability in the Cordillera Blanca, Peru. *Ann. Assoc. Am. Geogr.*, **100**(4), 794–805
- Milner AM, Brown LE and Hannah DM (2009) Hydroecological response of river systems to shrinking glaciers. *Hydrol. Process.*, **23**(1), 62–77
- Moore RD and 7 others (2009) Glacier change in western North America: influences on hydrology, geomorphic hazards and water quality. *Hydrol. Process.*, **23**(1), 42–61
- Nolin AW, Phillippe J, Jefferson A and Lewis SL (2010) Present-day and future contributions of glacier runoff to summertime flows in a Pacific Northwest watershed: implications for water resources. *Water Resour. Res.*, **46**(12), W12509 (doi: 10.1029/2009WR008968)
- Ohmura A (2001) Physical basis for the temperature-based melt-index method. *J. Appl. Meteorol.*, **40**(4), 753–761
- Pouyau B and 6 others (2005) On the future of the water resources from glacier melting in the Cordillera Blanca, Peru. *Hydrol. Sci. J.*, **50**(6), 999–1022
- Rabatel A, Machaca A, Francou B and Jomelli V (2006) Glacier recession on Cerro Charquini (16°S), Bolivia, since the maximum of the Little Ice Age (17th century). *J. Glaciol.*, **52**(176), 110–118
- Racoviteanu AE, Arnaud Y, Williams MW and Ordoñez J (2008) Decadal changes in glacier parameters in the Cordillera Blanca, Peru, derived from remote sensing. *J. Glaciol.*, **54**(186), 499–510
- Racoviteanu AE, Paul F, Raup B, Khalsa SJS and Armstrong R (2009) Challenges and recommendations in mapping of glacier parameters from space: results of the 2008 Global Land Ice Measurements from Space (GLIMS) workshop, Boulder, Colorado, USA. *Ann. Glaciol.*, **50**(53), 53–69
- Ramírez E and 8 others (2001) Small glaciers disappearing in the tropical Andes: a case-study in Bolivia: Glaciar Chacaltaya (16°S). *J. Glaciol.*, **47**(157), 187–194
- Raup BH, Khalsa SJS, Armstrong R, Helm C and Dyurgerov M (2008) GLIMS: progress in mapping the world's glaciers. In Lacoste H. and Ouwehand L eds. *IGARSS '07, International*

- Geoscience and Remote Sensing Symposium, 23–27 July 2007, Barcelona, Spain. Proceedings.* Institute of Electrical and Electronics Engineers, Piscataway, NJ, 3991–3993
- Soruco A and 9 others (2009) Mass balance of Glaciar Zongo, Bolivia, between 1956 and 2006, using glaciological, hydrological and geodetic methods. *Ann. Glaciol.*, **50**(50), 1–8
- Stahl K and Moore D (2006) Influence of watershed glacier coverage on summer streamflow in British Columbia, Canada. *Water Resour. Res.*, **42**(6), W06201 (doi: 10.1029/2006WR005022)
- Suarez W, Chevallier P, Pouyaud B and Lopez P (2008) Modelling the water balance in the glacierized Parón Lake basin (White Cordillera, Peru). *Hydrol. Sci. J.*, **53**(1), 266–277
- Uehlinger U, Robinson CT, Hieber M and Zah R (2010) The physico-chemical habitat template for periphyton in alpine glacial streams under a changing climate. *Hydrobiologia*, **657**(1), 107–121
- Urrutia R and Vuille M (2009) Climate change projections for the tropical Andes using a regional climate model: temperature and precipitation simulations for the end of the 21st century. *J. Geophys. Res.*, **114**(D2), D02108 (doi: 10.1029/2008JD011021)
- Vergara W and 7 others (2007) Economic impacts of rapid glacier retreat in the Andes. *Eos*, **88**(25), 261
- Viviroli D and 14 others (2010) Climate change and mountain water resources: overview and recommendations for research, management and politics. *Hydrol. Earth Syst. Sci.*, **7**(3), 2829–2895
- Vuille M and 6 others (2008a) Climate change and tropical Andean glaciers: past, present and future. *Earth-Sci. Rev.*, **89**(3–4), 79–96
- Vuille M, Kaser G and Juen I (2008b) Glacier mass balance variability in the Cordillera Blanca, Peru and its relationship with climate and the large-scale circulation. *Global Planet. Change*, **62**(1–2), 14–18
- Winkler M, Juen I, Mölg T, Wagnon P, Gómez J and Kaser G (2009) Measured and modelled sublimation on the tropical Glaciar Artesonraju, Perú. *Cryosphere*, **3**(1), 21–30
- Xu Z, Liu Z, Fu G and Chen Y (2010) Trends of major hydroclimatic variables in the Tarim River basin during the past 50 years. *J. Arid Environ.*, **74**(2), 256–267
- Yue S and Pilon P (2004) A comparison of the power of the t test, Mann–Kendall and bootstrap tests for trend detection. *Hydrol. Sci. J.*, **49**(1), 21–37

MS received 2 September 2011 and accepted in revised form 28 November 2011